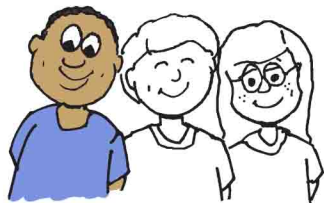
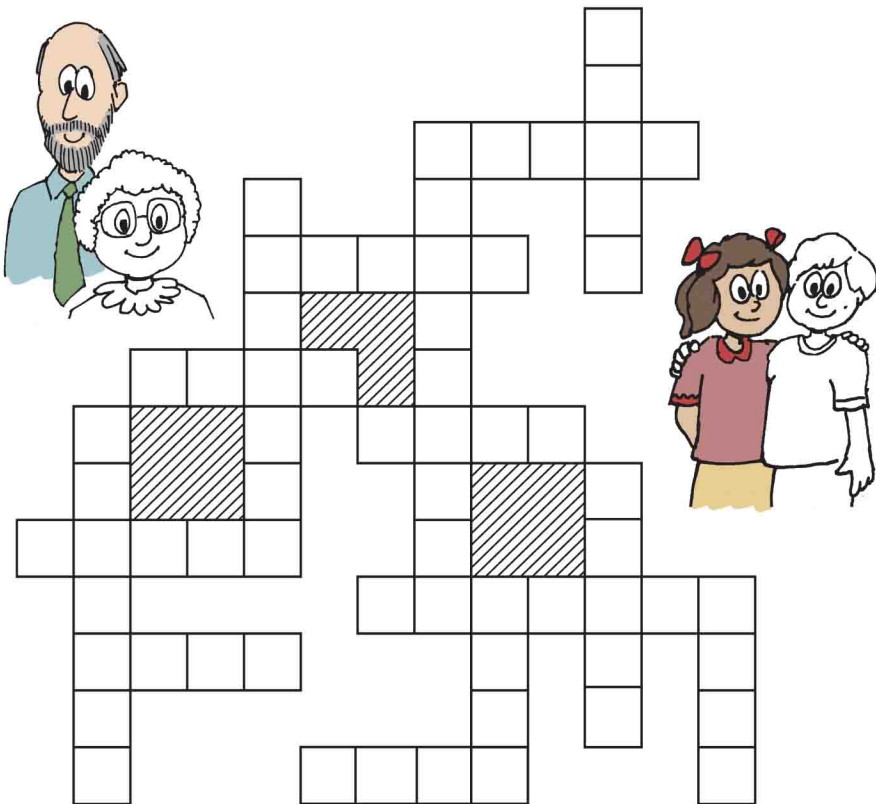


We recognize love because it has certain characteristics.

Fit the words into the boxes. Put a plus sign (+) beside each word that goes in the same direction as the word "love."
Hint: Put the longest words in first!

- | | | | |
|---------------|--------------------------|-----------|-----------------------|
| ___ angry | ___ boast | ___ envy | ___ evil (delight in) |
| ___ fail | ___ hope | ___ love | ___ patient |
| ___ persevere | ___ protect | ___ proud | ___ rude |
| ___ selfish | ___ truth (rejoice with) | ___ faith | |



At one time Paul was a child, then he gradually changed. What did he become?

Follow the step-by-step directions.

C H I L D

Replace the 1st 2 letters with 1 letter to make a word meaning "temperate."

Change 1 letter to make "intelligence."

Change 1 letter to make "belonging to me."

Change 1 letter to make "long, thick hair."

Drop 1 letter to make "an adult male."

